

# The Station That Cares



[WWW.WBQP.COM](http://WWW.WBQP.COM)

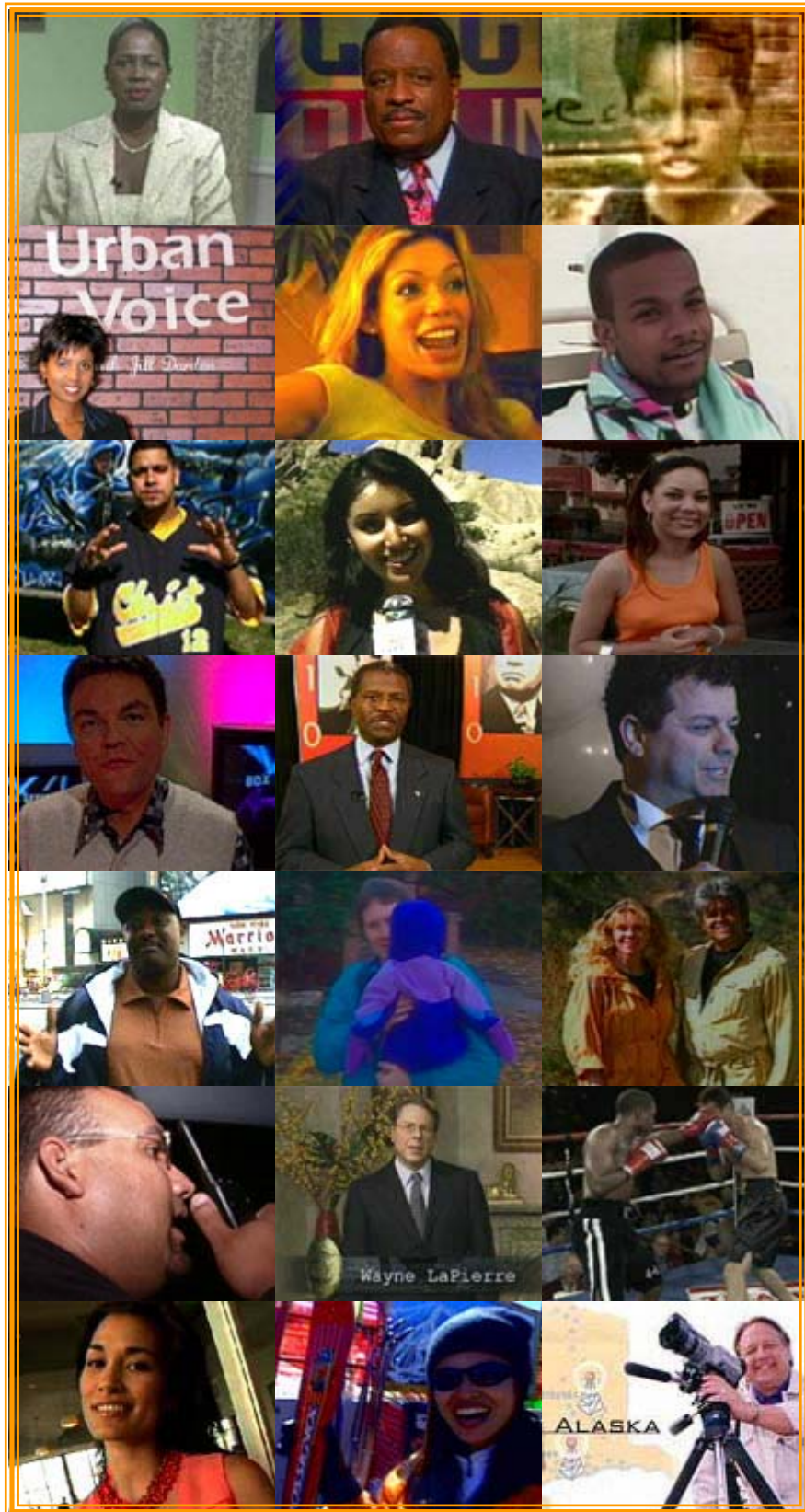
## Urban Programming



Uplifting the Urban Community!

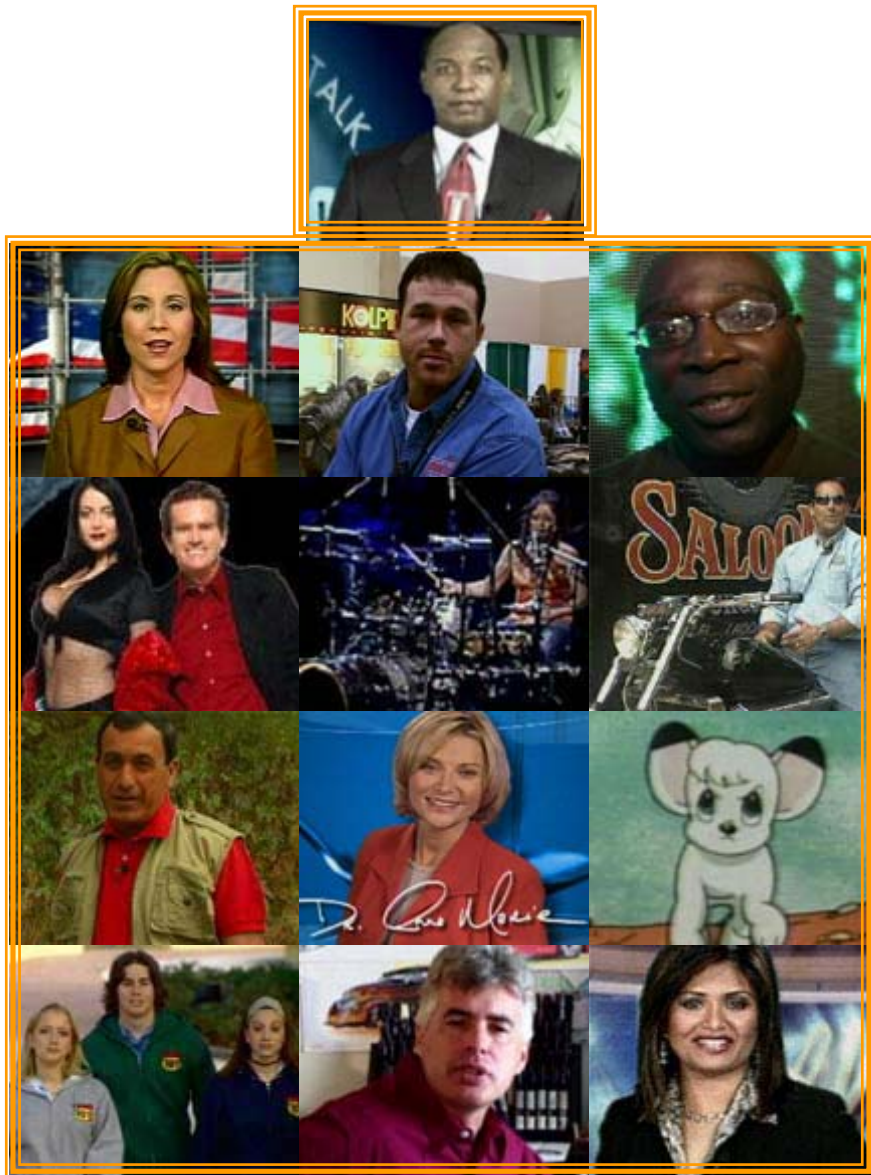
<p>Mon. 9/8PM</p>	<p>Sun. 8/7AM</p>	<p>Sun 6:30/5:30c</p>	<p>Mon. - Fri. 7:30/6:30PM</p>
<p>REAL TALK REAL PEOPLE</p>		<p>Sat 2/1PM</p>	<p>Tuesday Nights 8/7c</p>
<p>Sun. 7/6PM</p>	<p>Tues. 9/8PM</p>	<p>Fri. 6/7PM</p>	<p>Every Wednesday 9/8c</p>
<p>Wed. 8/7PM &amp; Sat. 5:30/4:30PM</p>	<p>8:30/7:30PM</p>	<p>Monday 8:30/7:30PM</p>	<p>11/10c</p>
<p>SAT. 9:30AM EST</p>		<p>SUNDAY AT 9PM / DC</p>	
		<p>Pacific Fusion</p>	

# Ethnic Programming





## General Market Programming

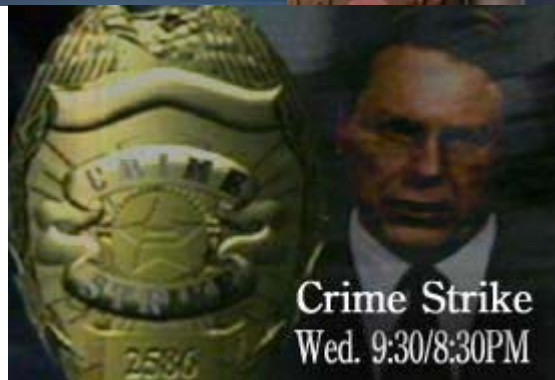


Channel 12/Cable 39

Channel 12/Cable 39



## Hispanic Programming



3101 NORTH "R" STREET  
PENSACOLA, FL 32505  
(850) 433-1210